

DESIGN	MT 6010 MK II
CLASSIFICATION	DNV + 1A1, E0-SF, DYNPOS AUTR, CLEAN, COMF-V (RATING 3), DK(10), HL(2,5/2,8), LFL* OIL REC: ACC. TO NOFO 2005 STANDARD
BUILDERS	HAVYARD LEIRVIK
PORT OF REG.	FOSNAVAAG
FLAG	NORWEGIAN
MMSI	259 632 000
IMO NO	9382944
DELIVERY DATE	DECEMBER 2007
CALLSIGN	JWQD

DETAILS BELIEVED TO BE CORRECT, BUT NOT GUARANTEED.



M/V HAVILA FORESIGHT

Outline Specification



M/V HAVILA FORESIGHT

Technical Specification

MEASUREMENTS

Length o.a.	93,60 m
Length b.p.p.	86,60 m
Breadth moulded	19,70 m
Depth moulded	7,85 m
Draught, max	6,30 m
Freeboard, min	1,56 m
Corresponding DWT	4785 t
Gross tonnage	4309 t
Net tonnage	1520 t
Light ship	3254 t
Displacement	8039 t

CLASSIFICATION

DNV + 1A1, E0-SF, Dynpos AUTR, CLEAN, COMF-V (rating 3), DK(10), hl(2,5 / 2,8), LFL*, OIL REC: Acc. To Nofo 2005 Standard

CARGO CAPACITIES

Deck cargo	
Deck area max	L x B=66m x 15,85m = 1046m ²
Deck strength	Main deck from stern to fr. 109 = 10t/m ²
Fuel Oil	1140 m ³ Flow meter with printer
Liquid Mud	SG 2,8 860 m ³ Total 8 tanks 1 Agitator in each tank (Hyd. Driven)
Brine	SG 2,5 505 m ³
Base oil	245 m ³
Pot water	1020 m ³
Drillwater / ballast	1235 m ³ / 1730 m ³
Methanol +	215 m ³
Nitrogen bottle rack system + 1 Nitrogene Comp.	
Special Product	215 m ³
Slop	310 m ³
ORO	1480 m ³
Cement / Barite	400 m ³ 8 Vertical tanks each 50 m ³
Emulsion Breaker	100 m ³

DISCHARGE RATES

Fuel Oil	2 x spindle Screw 0-250 m ³ 9 bar
Liquid Mud	4 x Ecc. Screw 0-100 m ³ 24 bar
Brine	2 x Ecc. Screw 0-250 m ³ 24 bar
Mineral oil	1 of 2 spindle Screw 0-150 m ³ 9 bar
Pot. water	2 x Spindle Screw 0-250 m ³ 9 bar
Drillwater/ballast	2 x Spindle Screw 0-250 m ³ 9 bar
Methanol	2 x Centrifugal 0-100 m ³ 9 bar
Special Product	2 x Spindle Screw 0-100 m ³ 9 bar
Slop	2 x Ecc. Screw 0-100 m ³ 24 bar
ORO	2 x Ecc. Screw 0-250 m ³ 24 bar 3 x Ecc. Screw 0-100 m ³ 24 bar
Cement / Barite	2 x Comp. 30 m ³ /min - 5,6 bar 2 x Cyclone 2 x Dust Collector
Emulsion Breaker	2 x Spindle Screw 0-100 m ³

TANK CLEANING SYSTEM

A total of 14 cleaning machines fitted in: MUD, Brine and Slop tanks

Slop Tank	1 x 40,0 m ³
Hot Water Tank	1 x 14,3 m ³

CARGO MANIFOLDS

ODIM ABCS system midships each side
Manifolds midships each side inside cargo rail and aft starboard side and port side.

MACHINERY / D/E-PROPULSION Resiliently Mounted

Main Engines	4 x 2188 KW Cat: Type3516-L
Main generators	4 x 2200 KW Type Mirelli
Harbour & Emergency Engine	1 x 400 BKW Cat: Type 3408
Harbour & Emergency generator	1 x 400 KW Mirelli

PERFORMANCE / CONSUMPTION

Max. speed	16,5 knots
Econ. speed	13,5 knots
Service speed	12,0 knots / 10,2 m ³ pr 24 hrs
Econ. speed	10,0 knots

DP II Average	Draft 4,5 mtr
DP II Average	Draft 5,8 mtr
Harbour Mode	0,8 t pr 24 hrs

MAIN PROPULSION

Frequency controlled	2 x 2200 KW RR AZP 100
Fwd. Tunnel thrusters (S Silent)	2 x 880 KW RR TT 2200 FP 1 x RR UL 1201
Fwd. Ulstein Aqua master rot table / retractable, el. driven	

BRIDGE DESIGN: NAUT - OSV

1 x Consol forward bridge
3 x Consol aft bridge
1 x Consol each bridge wing
1 x Radio station
1 x Operation Control / office
1 x Survey area

AUTOMATION SYSTEM

RRAS

LOADING COMPUTER

1 x Shipload

DP SYSTEM DYNPOS AUTR

Rolls – Royce RR DP2 AUTR
1 x CySkan Laser
1 x DPS Veripos LHD2 – GG1
1 x DPS Veripos LHD2 – G2
2 x Wind sensors: GILL Ultrasonic
1 x Radius

THRUSTER CONTROL

RR Helikonex

BRIDGE WATCH MONITORING SYSTEM

Ulstein BAS

ACCOMMODATION 30 PERSONS

Cabins	- 12 off single cabins
	- 6 off double cabins
	- 1 off 6 men cabin
	- 2 off office
	- 1 conference room
	- 1 off Hospital with additional 4 beds

LIFE SAVING EQUIPMENT

Safety Equipment	Acc to NMD/SOLAS for 30 persons
Life Raft	4 x 35 persons
Mob boat	Type MP Springer 800, 10 persons
Mob boat davit	HL9D MOB3500
Survival suits	30 persons

INCINERATOR

1 x Teamtec OGS 200 C

STEAM GENERATOR

1 x Clayton EO-185-1

ENTERTAINING EQUIPMENTS

1 x Sat. TV: Seatel
1 x Rack with 5 x Tuners and 1x DVD
1 x TV in all crew cabins
1 x TV in all lounges
1 x Radio / CD in all cabins
1 x Gymnasium w/Equipments

DECK EQUIPMENT

Windless	2x Rauma Brattvaag MW100/AW46K3
Tugger winch	2 x Rauma Brattvaag MW 200H
Capstan	2 x Rauma Brattvaag CH 100H
Deck Crane	2 x HMC 1610 LK 100-10 10t
Cargo securing winch	Total 6 x 3t pull. 5 t brake holding Placed on each side Shelter Deck
ODIM ABCS. Automated Bulk	Midship Starboard and Port
Hose Connection Stations	
RRM ASFA . Automated Sea	12pc Hydraulic winches
Fastening Arrangements.	

ANTI ROLLING SYSTEM

3 x Stabilizing tanks. Passive anti roll system

NAVIGATION EQUIPMENT

1x Furuno S-Band ARPA Radar, Model FAR-2837S
1x Furuno X-Band ARPA Radar, Model FCR-2827
1x Taiyo VHF Direction Finder, Model TD-L1550
1x Furuno Conning system, Model Furuno
2x Furuno DGPS Navigator, Model GP-150
2x Furuno ECDIS, Model TECDIS.
3x Anschutz Standard 22 Digital Gyrocompass (SEC-OP)
1x Anschutz Adaptive Autopilot, Nautopilot 2025
1x Plath Magnetic Compass Plath type, Reflecta 1 Fibeline

1x Furuno Navigational Echo Sounder (IMO approved)
1x Furuno Doppler Log, Model DS-80
1x Furuno AIS Transponder, Modell FA-150
1x Zenitel Sound Reception System, Modell VSS-III
1x Furuno Voyage Data Recorder, Model VR-3000

COMMUNICATION EQUIPMENT GMDSS A 3

1x Furuno MF/HF/DSC 250W Simplex Radio station
1x Furuno NX-700B Navtex Receiver.
2x Furuno Inmarsat-C w/EGC, Model Felcom 15
1x Furuno Inmarsat-F, Model Felcom 70
1x Telesupply Helibeacon, Model TS-1B
1x Jotron Aeronautical VHF, Model TR-710
1x ICOM Aeronautical Portable VHF, Model A6E
3x Jotron GMDSS approved portable VHF, Model Tron TR-20
2x Jotron Radar Transponder, Model TRON SART
1x Jotron EPIRB Automatic, Modell TRON 40S
1x Jotron EPIRB Manuel, Model TRON 45SXX
2x Furuno VHF/DSC Duplex, Model FM8800D
1x Furuno VHF Simplex Radiotelephone, Model FM2721
3x Motorola GM-380 Fixet UHF
3x Motorola Portable VHF, EX approved, Model GP380
4x Motorola Portable UHF, EX approved, Model GP380

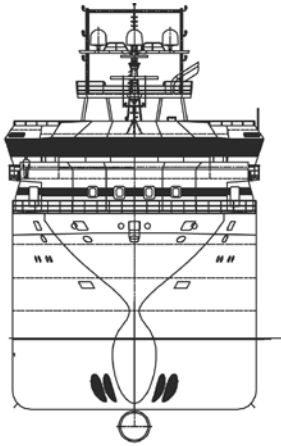
3 x Ericsson G36 GSM Phone: Voice / Fax
1 x GSM Phone: E-mail Nokia 32

Sound Reception system
1 x Stento VSS-III

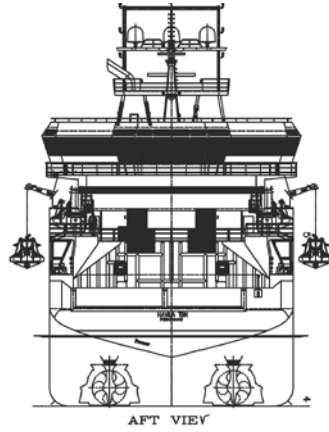
Integrated Communication System:
1 x Ulstein COM
2 x Telefax: Brother 8070 Laser

Dect System: Alcatel:
2 x Indoor base stations
3 x Outdoor base stations
4 x Portable phones Alcatel 200 EX

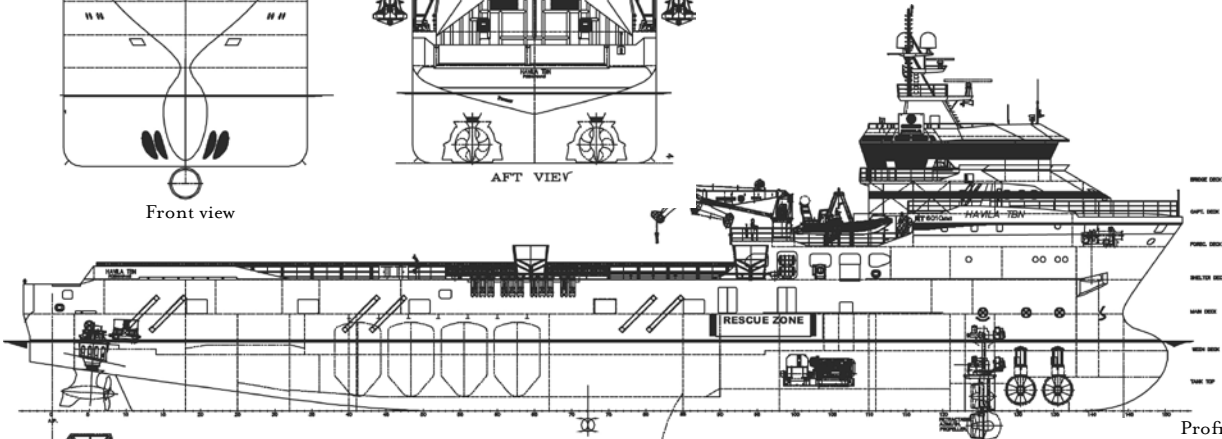
Loudhailer system: Speaker 150W
1 x Sound Powered Telephones system ith total of 5 telephones



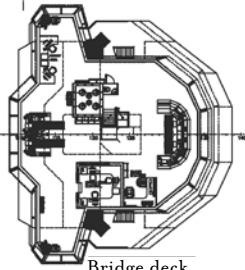
Front view



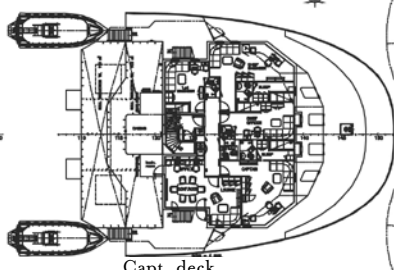
AFT VIEW



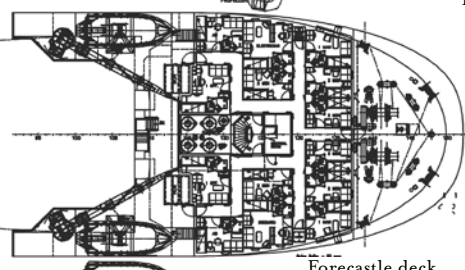
Profile



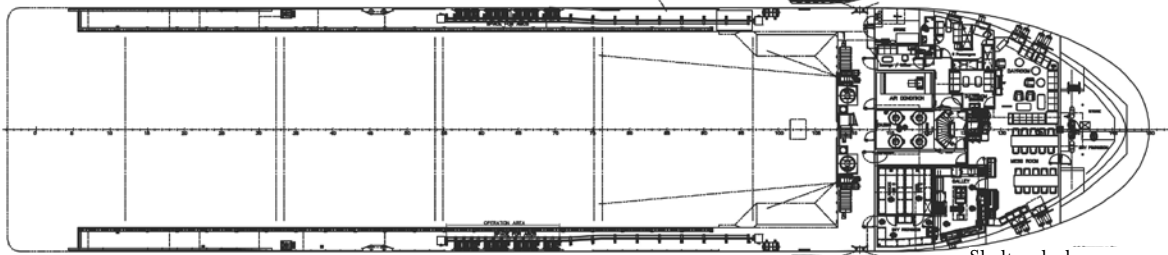
Bridge deck



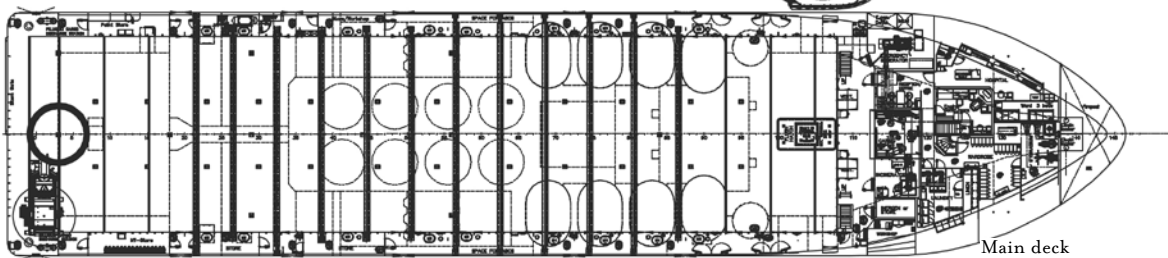
Capt. deck



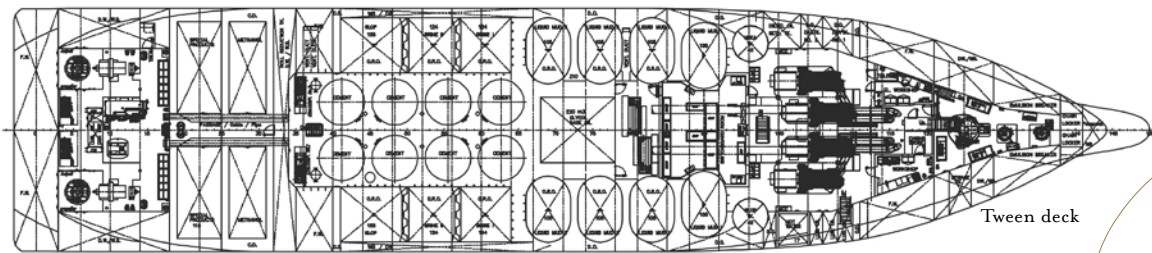
Forecastle deck



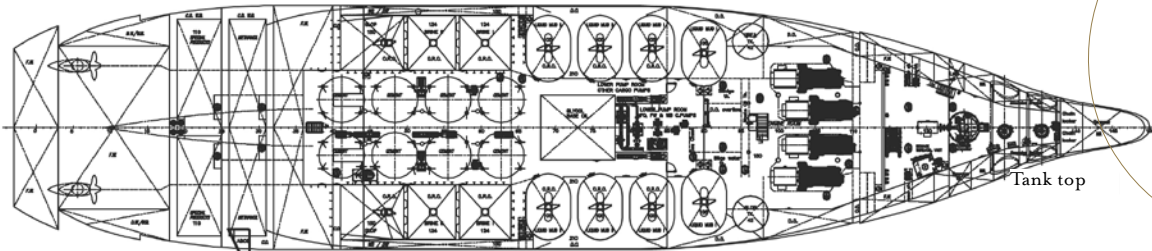
Shelter deck



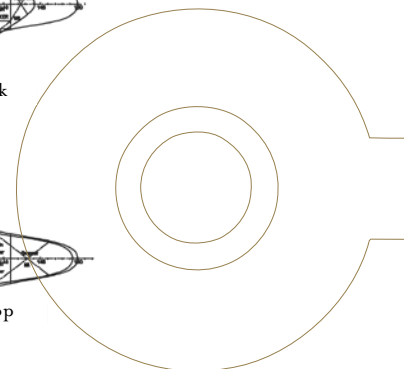
Main deck



Tween deck



Tank top



CARGO CAPACITY PLAN

TANK NR	Volume M ³	Fuel	Pot Water	Drill water M ³	Ballast water	Mud SG 2.8	Brine SG 2.5	Glycol Base Oil	Methanol	ORO Crude Oil	Emulsion Urea Special product	Anti Heeling Slop	Dry Bulk
1	149,7			149,7	149,7								
2 PS	98,2			98,2	98,2								
2 SB	85,2			85,2	85,2								
3 PS	128,5			128,5									
3 SB	130,5			130,5									
4 PS	82,3	82,3											
4 CL	116,6	116,6											
4 SB	89,7	89,7											
5 PS	139,4	139,4											
5 SB	139,4	139,4											
6 PS	195,6	195,6											
6 CL	102,1	102,1											
6 SB	197,2	197,2											
7 PS	146,7			146,7	146,7								
7 CL	142,6			142,6	142,6								
7 SB	146,7			146,7	146,7								
8 PS	186,6		186,6										
8 SB	189,3		189,3										
9 PS	107,4								107,4				
9 SB	107,4								107,4				
10 PS	109,0										109,0		
10 SB	104,7										104,7		
11 PS	77,5			77,5	77,5								
11 CL	175,5		175,5										
11 SB	83,3			83,3	83,3								
12 PS	105,0		105,0										
12 SB	105,0		105,0										
13PS	51,0										51,0		
13SB	51,0										51,0		
14 PS	40,5										40,5		
14 SB	40,1											40,1	
15 PS	110,5					110,5							
15 SB	110,5					110,5							
16 PS	109,9					109,9				109,9			
16 SB	109,9					109,9				109,9			
17 PS	109,9					109,9				109,9			
17 SB	109,9					109,9				109,9			
18 PS	109,9					109,9				109,9			
18 SB	109,9					109,9				109,9			
19 CL	243,7							243,7					
20 PS	128,6						128,6			128,6			
20 SB	128,6						128,6			128,6			
21 PS	124,8						124,8			124,8			
21 SB	124,8						124,8			124,8			
22 PS	155,9									155,9		155,9	
22 SB	155,9									155,9		155,9	
23 RRT	93,3			93,3	93,3							93,3	
24 RRT	97,4			97,4	97,4							97,4	
25 RRT	116,2			116,2	116,2							116,2	
44 CD	281,6				281,6								
45 CD	212,8				212,8								
BAR 1													50,0
BAR 2													50,0
BAR 3													50,0
BAR 4													50,0
CEM 5													50,0
CEM 6													50,0
CEM 7													50,0
CEM 8													50,0
TOTAL		1062,3	1020,4	1236,8	1731,2	880,4	506,8	0,0	107,4	0,0	356,2	658,8	400,0

1 M³ = 6,289 BARREL (BBL) = 35,315 F3



HAVILA SHIPPING ASA
P.O.Box 215
NO-6099 FOSNAVÅG
Norway

Phone: +47 700 80 900
Fax: +47 700 80 901
Duty Ph: +47 700 80 928
chartering@havila.no

www.havila.no